

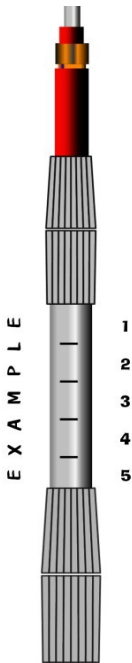
Barney's

PREMIUM FIBERGLASS HEIGHT-POLE FOR PILOT CARS

IT IS THE RESPONSIBILITY OF THE OPERATOR TO KNOW OR OBTAIN TRAINING IN PROPER USE AND PROCEDURES FOR HEIGHT POLE OPERATIONS.
BARNEYS' PILOT CAR EQUIPMENT IS IN NO WAY LIABLE FOR THE USE OR MISUSE OF THE PRODUCT

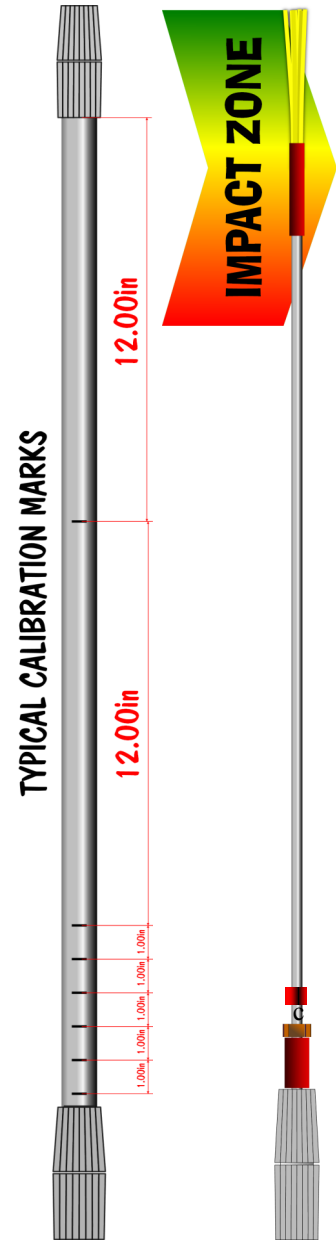
INSTALLATION AND USE

- Mount receiver tube at true vertical for best performance. See reverse for tube detail.
- Mounting should be strong enough to withstand torque from wind and impact. Brush guards, Bull Bars, Front Receiver Hitches and Towbar Brackets make excellent mounting points.
- Place Pilot-Pole in receiver tube and secure with pin or long shackle padlock.
- Insert top rod section till red shrink tube touches Twist-lock collar.
- Measure total height from level ground to tip.
- Extend top 1" diameter section just enough to achieve an even foot height.
- Remaining Tubes are marked by foot, half foot and inch increments.
- Add feet using the 1 1/4 diameter tube first.
- Always use the T-Bolt Clamps to secure the lower sections.
- Finish with any inches on 1 3/4 dia lowest tube.
- **NEW RED marks on lower section count six inches backwards from 2 foot mark.**
- Many combinations are possible, but favor the larger sections for most rigidity.



EXAMPLE:
If the beginning height is 8 feet 7 inches, first add 5 inches to the top section to get 9 feet even.
Now if you want a height of 16 feet 4 inches you need to add 7 feet 4 inches. Just add 3 feet from the 1 1/4 inch section, 2 feet from the 1 1/2 inch section and 2 feet 4 inches from the 1 3/4 inch section. See table for available tube lengths. Only whole units are marked.

TUBE SIZE	FEET	HALF FEET	INCHES
1	3	1	13
1.25	3	0	3
1.5	2	1	4
1.75	2	0	6



Barney's Pilot Car Equipment

2233 NE 244th Ave STE E-4
Wood Village, OR 97060

Phone: 503-593-1190
Fax: 503-467-5546

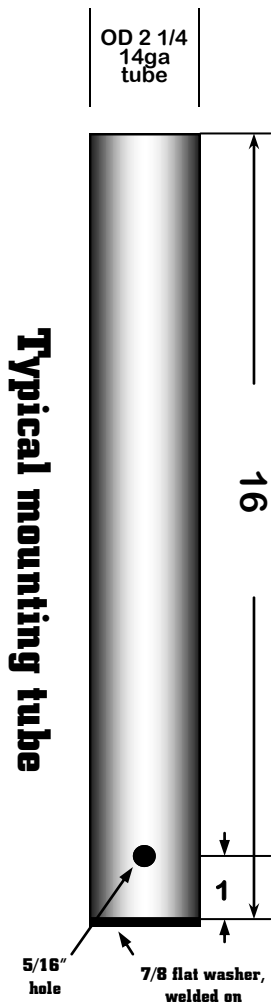
"We build our reputation"

E-mail: barneypilotcar@gmail.com

BEST PRACTICES:

**DO NOT STRIKE OBJECTS BELOW THE
"IMPACT ZONE" AT MORE THAN
45 MILES PER HOUR
DAMAGE TO THE TOP AND POLE MAY RESULT!**

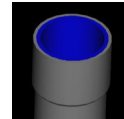
IMPACT ZONE



- You can make your own mounting tube from 2 1/4 inch 14 gauge muffler pipe. Weld a 7/8 flat washer on the bottom. Drill hole as shown.
- Place a few wraps of electrical or duct tape around the base section where it fits into the top of the mounting tube as shown at left, to create a snug fit.
- Secure the Pilot-Pole in the mounting tube with a 5/16 long hasp padlock to prevent theft.
- Starting with the lowest tube, slide each one down and turn till its slot drops over the locking pin/padlock. Now its held firmly from rotating so the collars are easy to loosen.
- Don't over tighten Sure-Lock collars!
- Sure-Lock collars are attached to the tubes using a unique tape that strongly adheres to the fiberglass and creates a high friction press fit with the plastic collars. In the unlikely event that a collar comes loose, it can be carefully driven back onto the tube with a hammer and a wood block.
- **Keep the sliding sections clean for best results. Oily film on the fiberglass can be cleaned off with common spray cleaners. For best results we recommend scouring powder. (like AJAX).**



WRAP TAPE ON LOWER SECTION IF NOT USING PILOT-POLE TUBE WITH PLASTIC INSERT. USE LOCKING PIN IN THE BOTTOM



NESTED TUBES ARE SLOTTED TO FIT ON PIN

The latest information, updates, user tips and accessories on the Pilot-Pole will be posted on <http://pilotpole.com>

Send a user tip or a photo of your rig with a Pilot-Pole to barneypilotcar@gmail.com